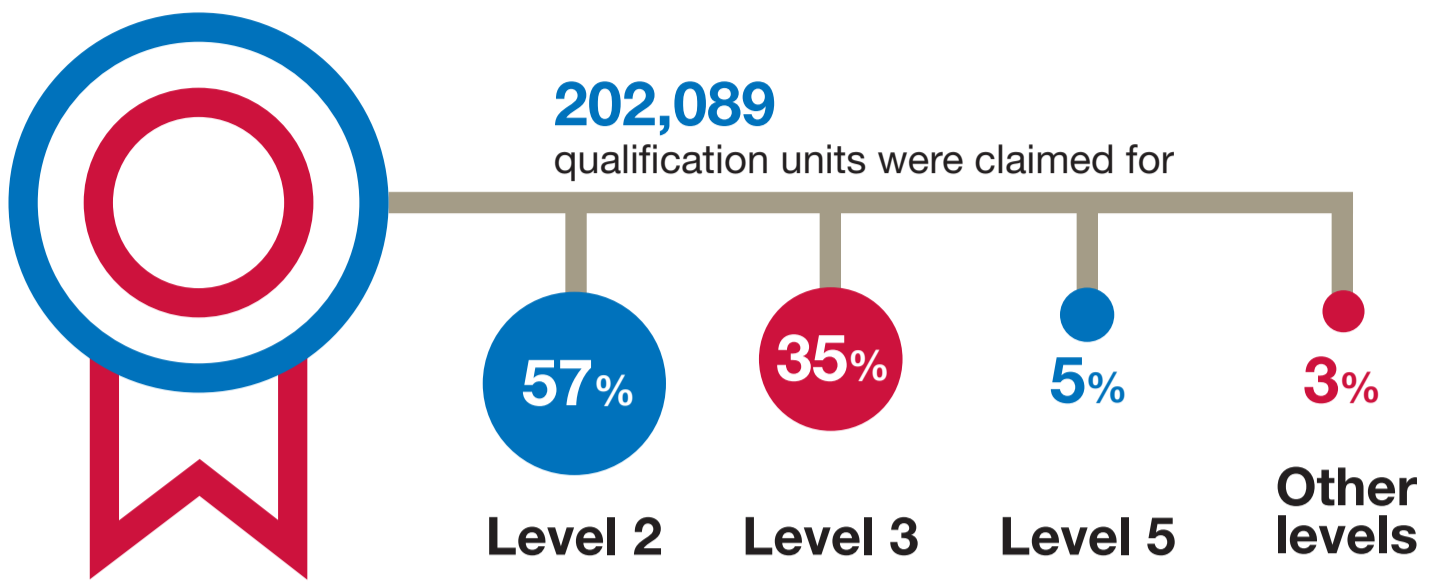


# The Workforce Development Fund

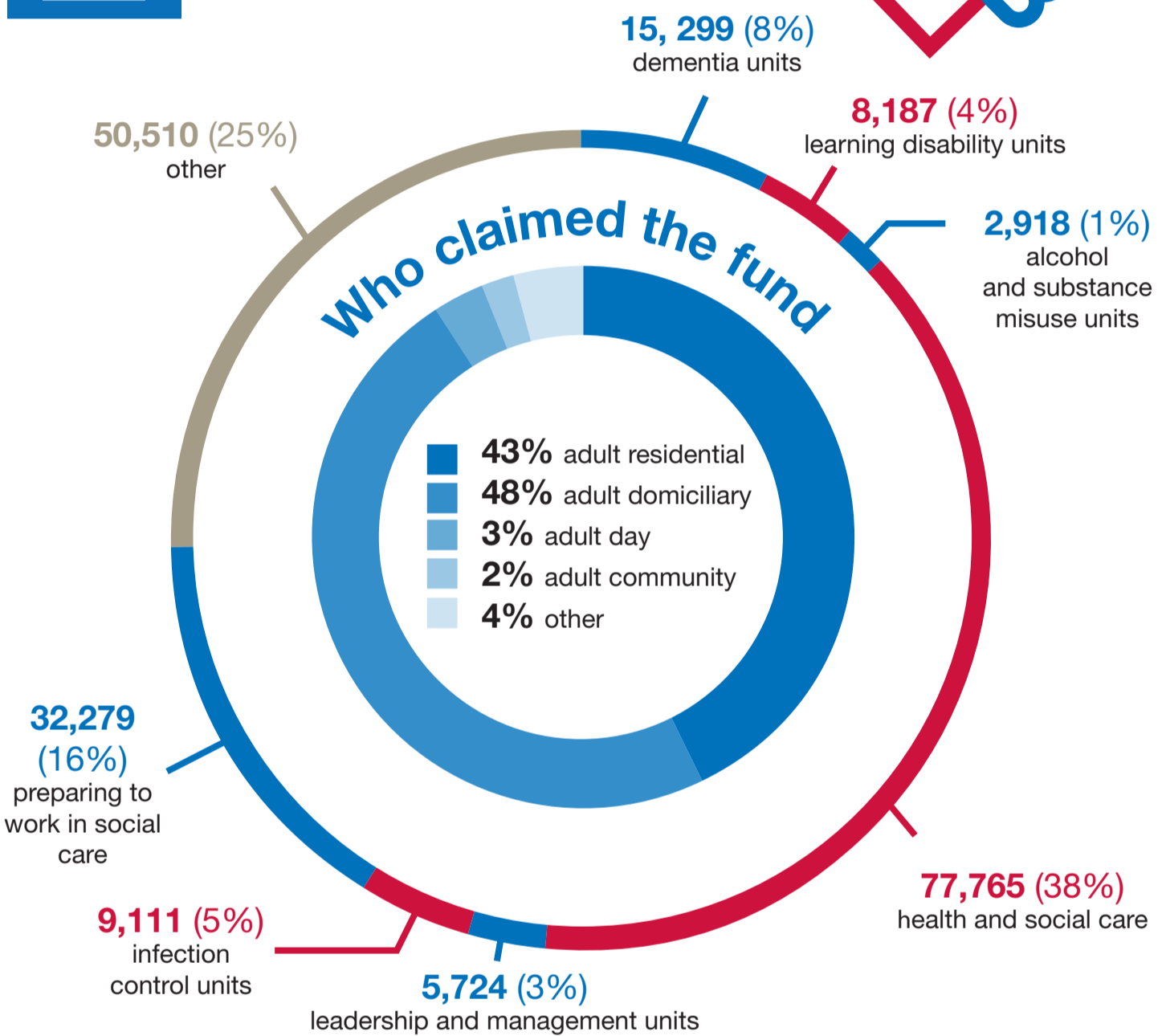
2016-17



## Who did the fund support?



**3,637** establishments claimed for **20,648** workers



We view the Workforce Development Fund as a special and really beneficial pot of money which enables additional investment into developing our staff. Particularly for those staff willing and keen to learn but often ineligible to access other funding routes. It also allows us to purchase more specialist or bespoke development opportunities to improve quality of care which otherwise we just couldn't afford.

Rosie Hawley, Service Transformation Trainer, HFT Bradford, June 2016

