

Integration and Integrated Care Systems (ICSs)

For adult social care providers, managers and leaders

June 2022

This information was correct at the time of writing and will be reviewed regularly.



What is integration?

Integration

Working together

Services and systems working together across health, social care, housing, community services and more to provide co-ordinated and quality care.

Personalised care

Promotes personalised care and better outcomes for people supported, giving them more choice and control.

Support networks

Creates support networks around individuals using their strengths and assets and those of their communities.

Effective relationships

Encourages effective relationships across services and the system to provide joined up care.



TLAP - Making It Real

TLAP Making it Real puts integration into context. People with lived experience were involved throughout the development of the I and We statements to support good personalised care and support, with the belief that people want to have a life not a service with more choice and control.

‘I’ Statement

“I have care and support that is co-ordinated and everyone works well together and with me.”

‘We’ Statement

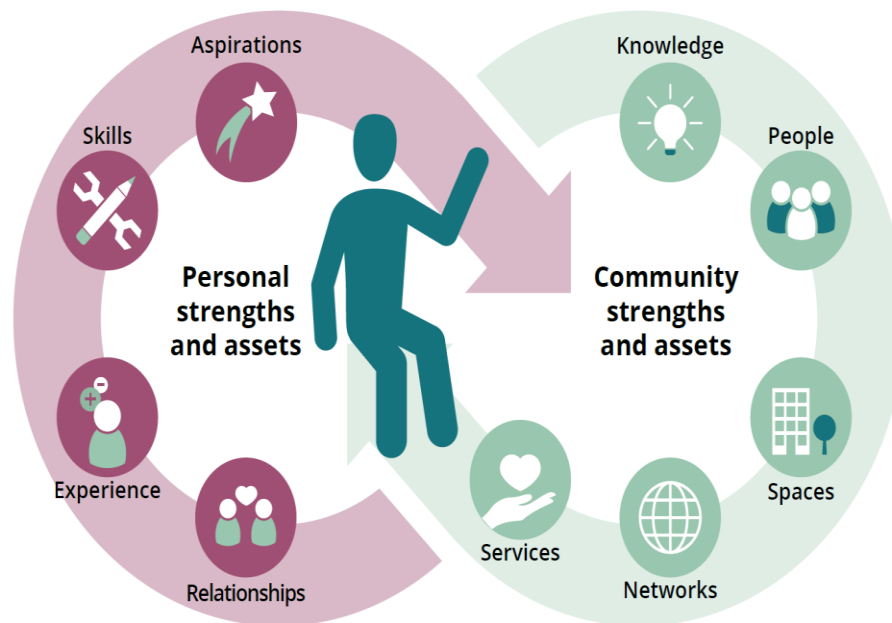
“We work in partnership with others to make sure that all our services work seamlessly together from the perspective of the person accessing services.”



[Find out more at thinklocalactpersonal.org.uk](http://thinklocalactpersonal.org.uk)

Looking ahead – why does integration matter?

- Our current system needs to transform to meet longer term demand.
- People are living longer with more complex needs.
- Better focus on prevention and promoting health and wellbeing, changing the focus from what's wrong to what's strong.
- Gives people more choice and control over their lives.



Taken from NICE/SCIE - [Evidence for strengths and asset based outcomes - quick guide](#)



The King's Fund: video

The King's Fund short video - How does the NHS in England work and how is it changing?

What are the key organisations that make up the NHS? And how can they collaborate with partners in the health and care system to deliver joined-up care? Watch our animation to find out.



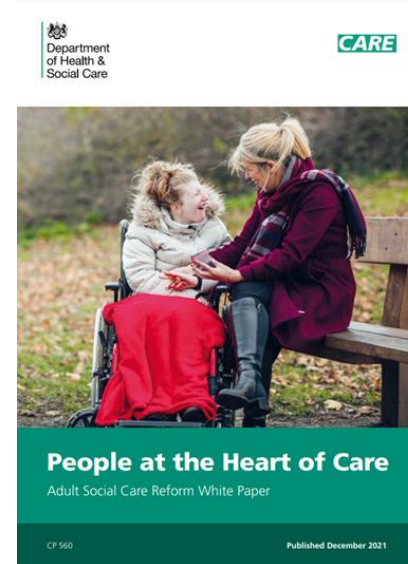
Legislation, policy and guidance

Current legislation

- Care Act 2014

New legislation

- Health and Social Care Act 2022



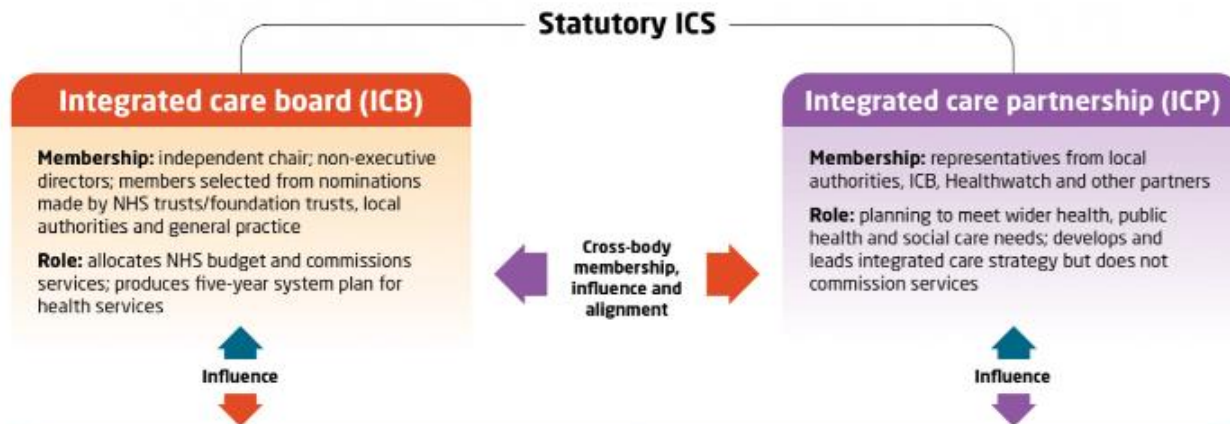
Integrated Care Systems - A three tiered model

Integrated care systems (ICSs)

Key planning and partnership bodies from April 2022

NHS England
Performance manages and supports the NHS bodies working with and through the ICS

Care Quality Commission
Independently reviews and rates the ICS



Partnership and delivery structures		
Geographical footprint	Name	Participating organisations
System Usually covers a population of 1-2 million	Provider collaboratives	NHS trusts (including acute, specialist and mental health) and as appropriate voluntary, community and social enterprise (VCSE) organisations and the independent sector; can also operate at place level
Place Usually covers a population of 250-500,000	Health and wellbeing boards	ICS, Healthwatch, local authorities, and wider membership as appropriate; can also operate at system level
	Place-based partnerships	Can include ICB members, local authorities, VCSE organisations, NHS trusts (including acute, mental health and community services), Healthwatch and primary care
Neighbourhood Usually covers a population of 30-50,000	Primary care networks	General practice, community pharmacy, dentistry, opticians



ICS governance

The statutory ICS will be made up of two key bodies:

- Integrated Care Board (ICB) – take on planning functions previously held by clinical commissioning groups
- Integrated Care Partnership (ICP) – involving NHS, local authorities, social care, housing, Voluntary, Community and Social Enterprise (VCSE) and more as equal partners.



Partnership and delivery

- Provider collaboratives
- Health and wellbeing boards
- Place based partnerships
- Primary care networks (PCNs)

The Care Quality Commission (CQC) will independently review and rate the quality of partnership working within ICSs.

The NHS organisations within ICSs, including ICBs, NHS trusts and foundation trusts, will be accountable to NHS England for their operational and financial performance.



Find out more

- [Skills for Care – Integration](#)
- [Skills for Care Workforce Data - My ICS area](#)
- [NHS England Integrated Care](#)
- [Evidence for strengths and asset-based outcomes - quick guide](#)
- [Think Local Act Personal - Making it Real](#)
- [People at the Heart of Care: adult social care reform white paper](#)
- [Joining up care for people, places and populations](#)
- [NHS People Plan](#)
- [Guidance on the ICS people function](#)
- [The King's Fund - Integrated Care Systems explained](#)
- [The King's Fund - How will ICSs work under the new Health and Social Care Act](#)
- [The King's Fund short video - How does the NHS in England work and how is it changing?](#)

