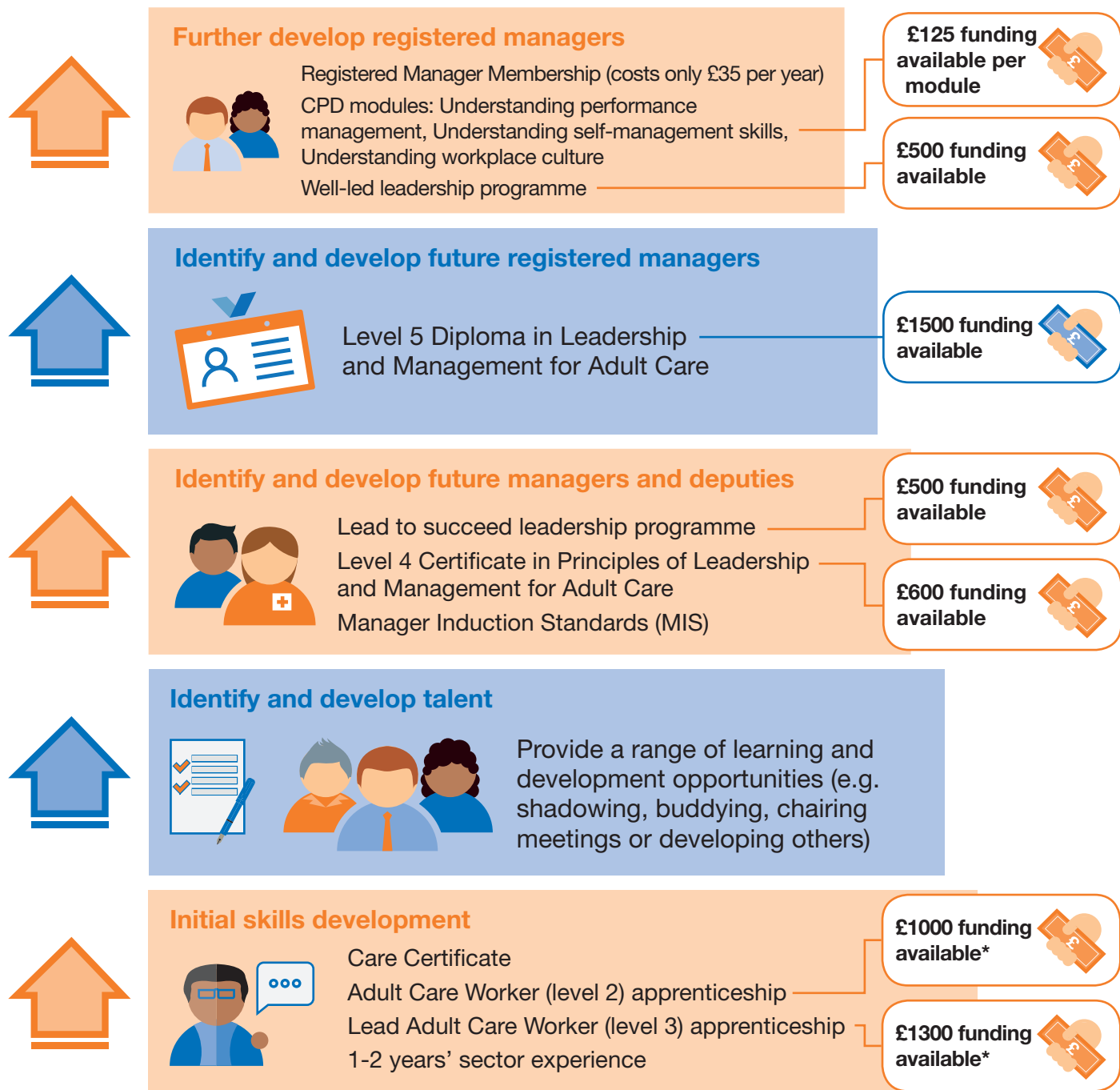


Developing and supporting managers and deputies



At each level of their development, Skills for Care recommends that managers and deputies are given the support, opportunities and time required to complete learning and development. Our recommended route is outlined below; remember different people will enter this at different levels.



Find out more at www.skillsforcare.org.uk/succession

*Alternatively, you could choose a standalone Level 2 Diploma in Care (£600) or Level 3 Diploma in Adult Care (£800)

