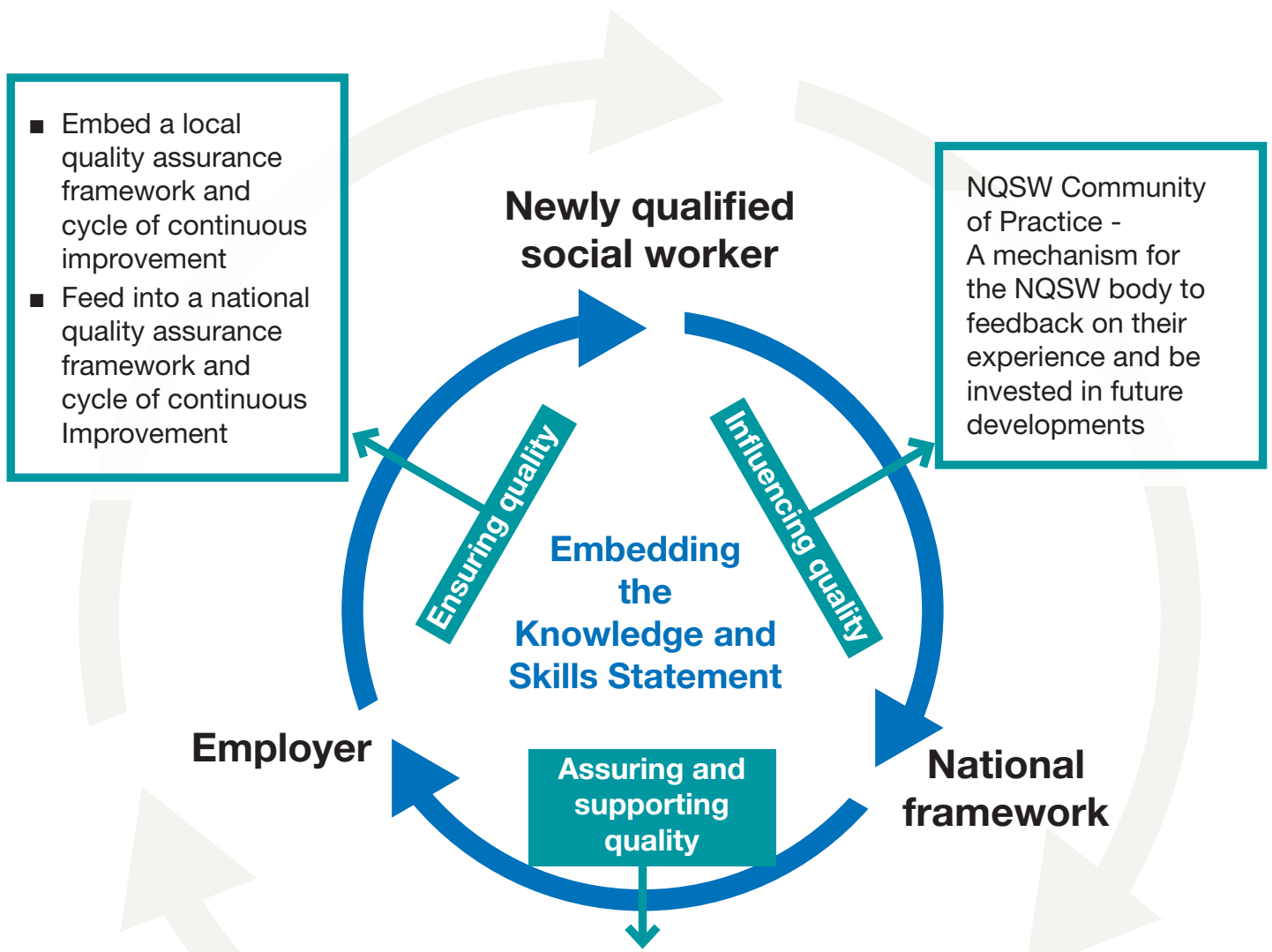


The child and family ASYE

Cycle of quality assurance and continuous improvement



- Embed a local quality assurance framework and cycle of continuous improvement
- Feed into a national quality assurance framework and cycle of continuous Improvement

NQSW Community of Practice - A mechanism for the NQSW body to feedback on their experience and be invested in future developments

Newly qualified social worker

Embedding the Knowledge and Skills Statement

Employer

National framework

Assuring and supporting quality

Ensuring quality

Influencing quality

Assuring the quality of local ASYE delivery through:

- the development of evaluation criteria and supporting materials
- an organisational 360 degree evaluation tool
- in-depth quality assurance review visits
- support where you have identified areas that need to be improved.

Support for employers to develop and implement best practice through:

- guidance
- support
- communication
- action learning facilitation training and support package.