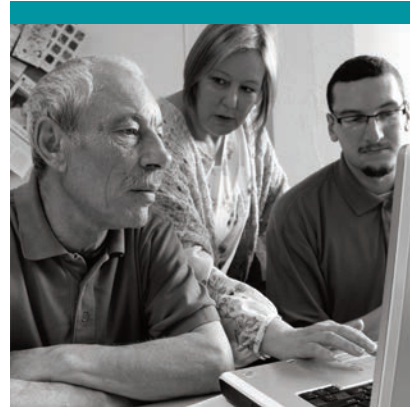


Developing community skills - what is it I can do...

5



...if I am planning
and making policy
for services?

If I am able to plan and make policy for services I can:

- analyse all relevant information about local issues
- have an open dialogue with people who have community knowledge, to shape services
- recognise the role and contribution of community informal support and develop policy that recognises community assets
- calculate the cost/benefit analysis of mutual support systems, particularly for reaching out to those who are not involved or whose voices are not heard
- influence public spending priorities and decisions
- have a holistic and integrated view of workforce issues and planning for future requirements
- acknowledge and incorporate the importance of community skills development and using a community assets based approach
- ensure national and local policy and planning are linked.



I can make most of informal community support by:

- knowing where the expertise and relationships are and who to go to and how to access them
- promoting, publishing and enabling opportunities for individuals and groups to be connected, encouraging co-production of policy and planning
- maximising the use of local accounts
- reading and researching – making sure I have up-to-date information and a knowledge of the whole marketplace agenda
- analysing information and evidence relevant to the health and wellbeing of the local community
- sharing the analysis of data for policy and planning purposes
- measuring and evaluating the impact of local community support against national benchmarks
- providing evidence-based need for change with decision makers.



Potential outcome

My planning and policy making is based on clear evidence of what is effective in supporting people to live independently.

This insert and the full pack contents may be copied for non-commercial distribution in aid of community skills development.

Skills for Care

West Gate
6 Grace Street
Leeds
LS1 2RP

Telephone 0113 245 1716
Email info@skillsforcare.org.uk

© Skills for Care 2013