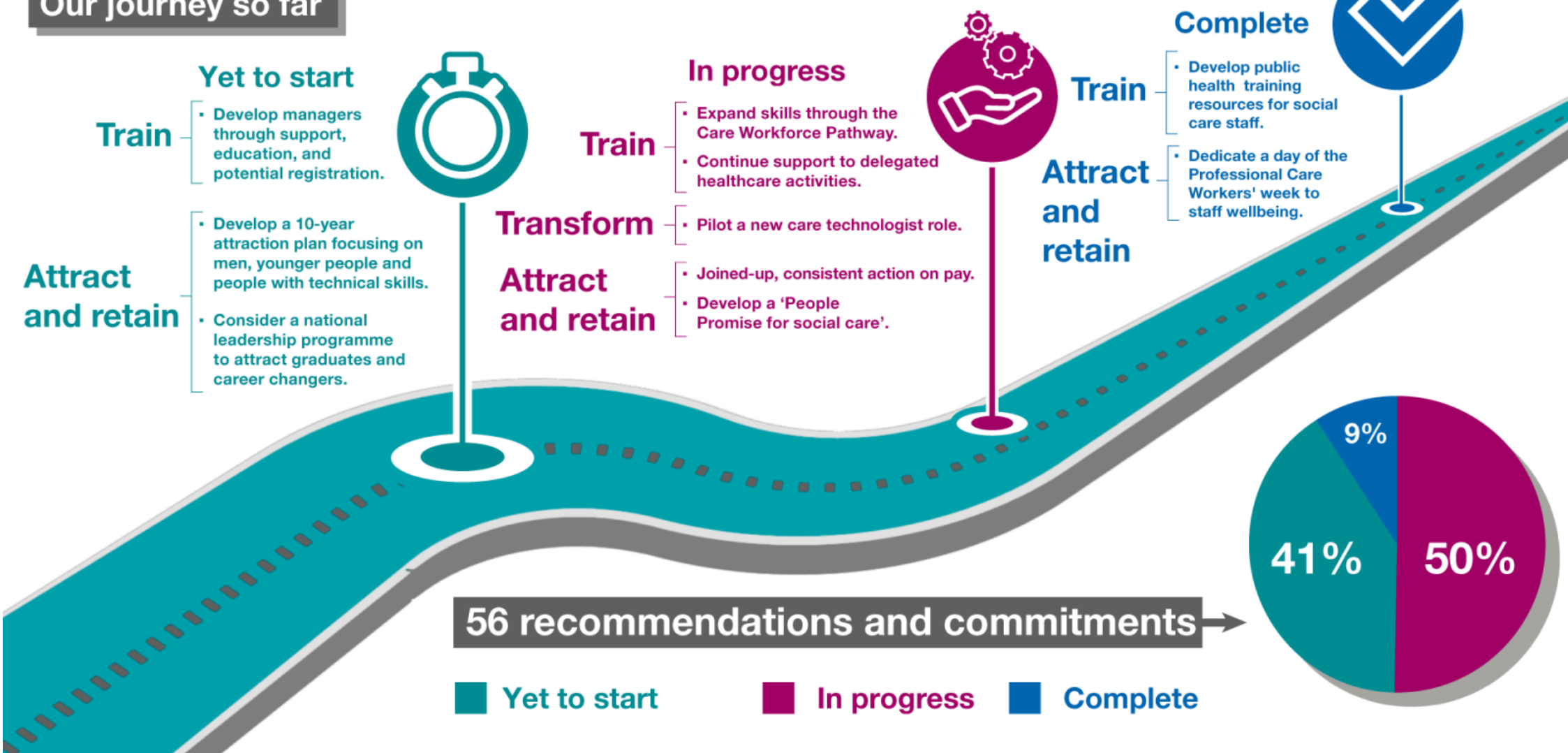


Adult Social Care Workforce Strategy one year on

Our journey so far

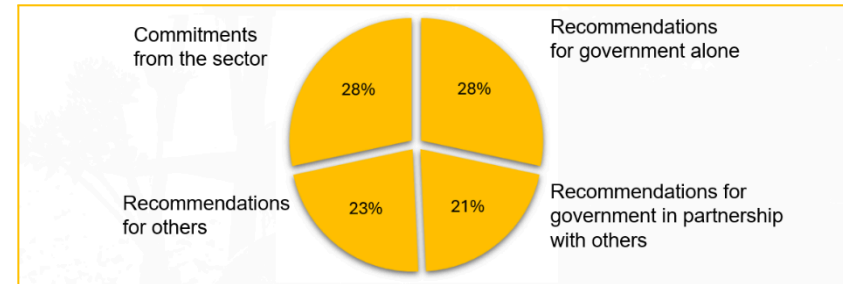


For the first time ever, the adult social care sector has come together to develop a 15-year Workforce Strategy for Adult Social Care in England. It was developed by the sector, for the sector - led by Skills for Care - and published on 18 July 2024.

The Workforce Strategy means we know what the issues are, what needs to be done to attract and retain, train and transform the workforce - and who needs to do it. Over half of the Strategy's recommendations and commitments are now in progress or complete.

The Workforce Strategy is a call to action for all of us. Fewer than half the recommendations and commitments in the Strategy need some kind of government action – and just over a quarter are things that only government can do.

The rest are recommendations for organisations outside government – and commitments from people already in a position to take action.



The Workforce Strategy has **unified the sector system leaders in ways that have created space for different voices and perspectives** to be surfaced, openly discussed and addressed with a common purpose in mind.

It's one year since the launch of the Workforce Strategy. Learning from our recent review of the Strategy's recommendations has reaffirmed that the Strategy is relevant and continues to reflect sector and government priorities.

We're entering Year 2 with strong momentum - translating national strategy into change on the ground:

- Over 40 system leaders from 32 organisations are working together as our Oversight Executive to oversee and deliver implementation.
- Over 400 people working in social care have signed up to be Workforce Strategy Champions - advocating for the Strategy, translating it into their work and making it real. And that number is growing.

The system-wide partnership is built on trust, respect and collaboration. The sector can - and already is - delivering a lot of the Strategy ourselves and, **with government alongside us, we can unlock the full potential and social impact the Strategy can make**, supporting health and social care policy priorities.

Read the Workforce Strategy

See how it supports the Government's 3 shifts