

The size and structure of the adult social care sector and workforce in England, 2020

Continued growth of the adult social care workforce

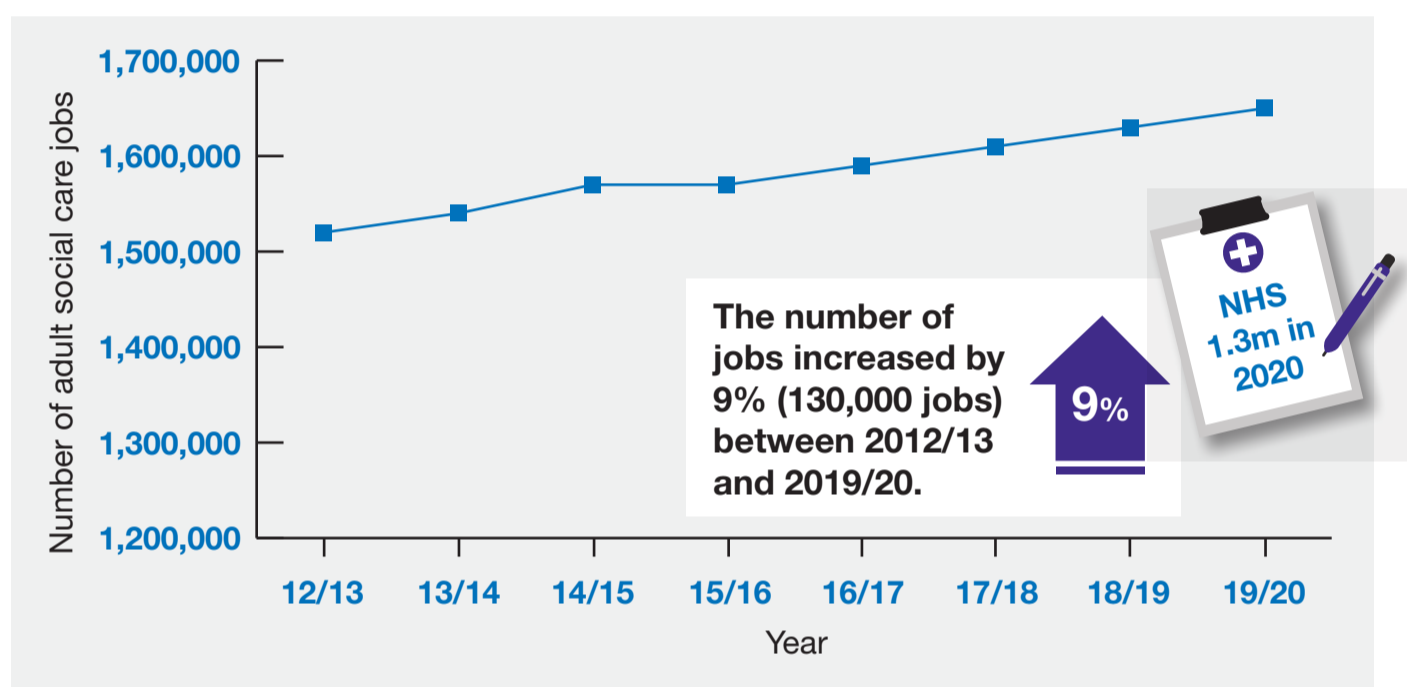
It should be noted that the data used in this report for the 2019/20 period was collected prior to the height of the COVID-19 pandemic in England. The ASC-WDS data used for the 2019/20 period was collected over the course of the year (March 2019 to March 2020) and data submitted in March 2020 was carefully analysed to ensure it did not significantly impact the findings.

Skills for Care is analysing ASC-WDS data on a monthly basis to monitor the impact of COVID-19 on the sector and workforce. The outputs from this analysis can be found on the [COVID-19 section](#) of our Workforce Intelligence website.

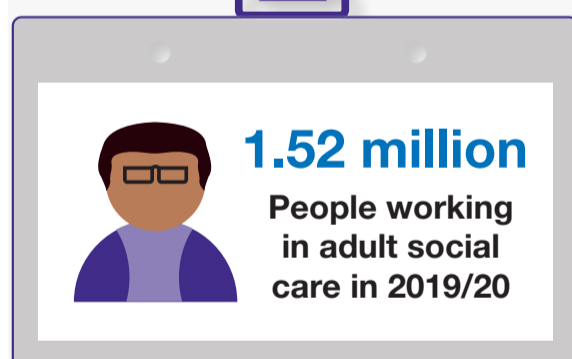
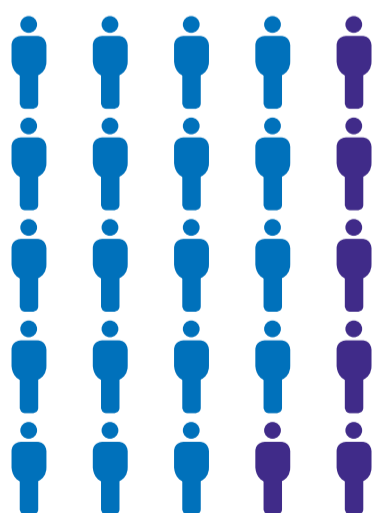
1.65 million jobs



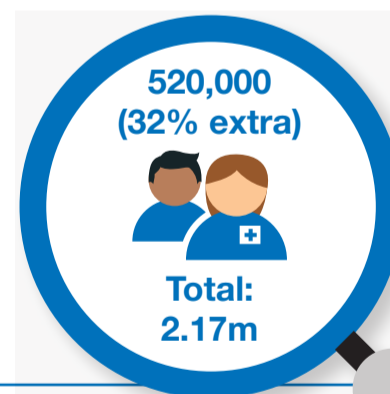
in adult social care
in England



Number of jobs in adult social care in **2019/20** and the number of jobs projected to be required by **2035**
Each person = 83,000 jobs

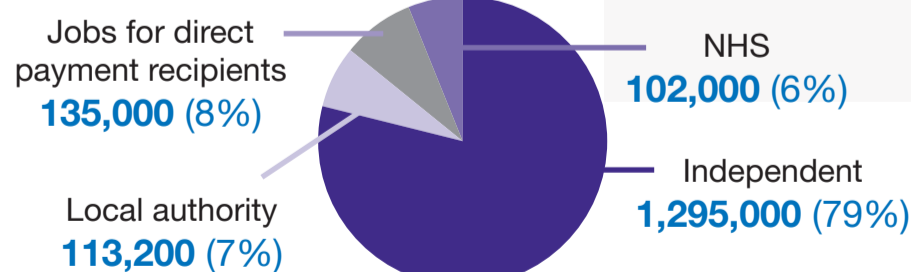


Additional jobs by 2035



65+ model
this model assumes the workforce will grow proportionally to the number of people aged 65 and over in the population

Jobs by sector



For more information refer to the full report which can be downloaded at www.skillsforcare.org.uk/sizeandstructure

