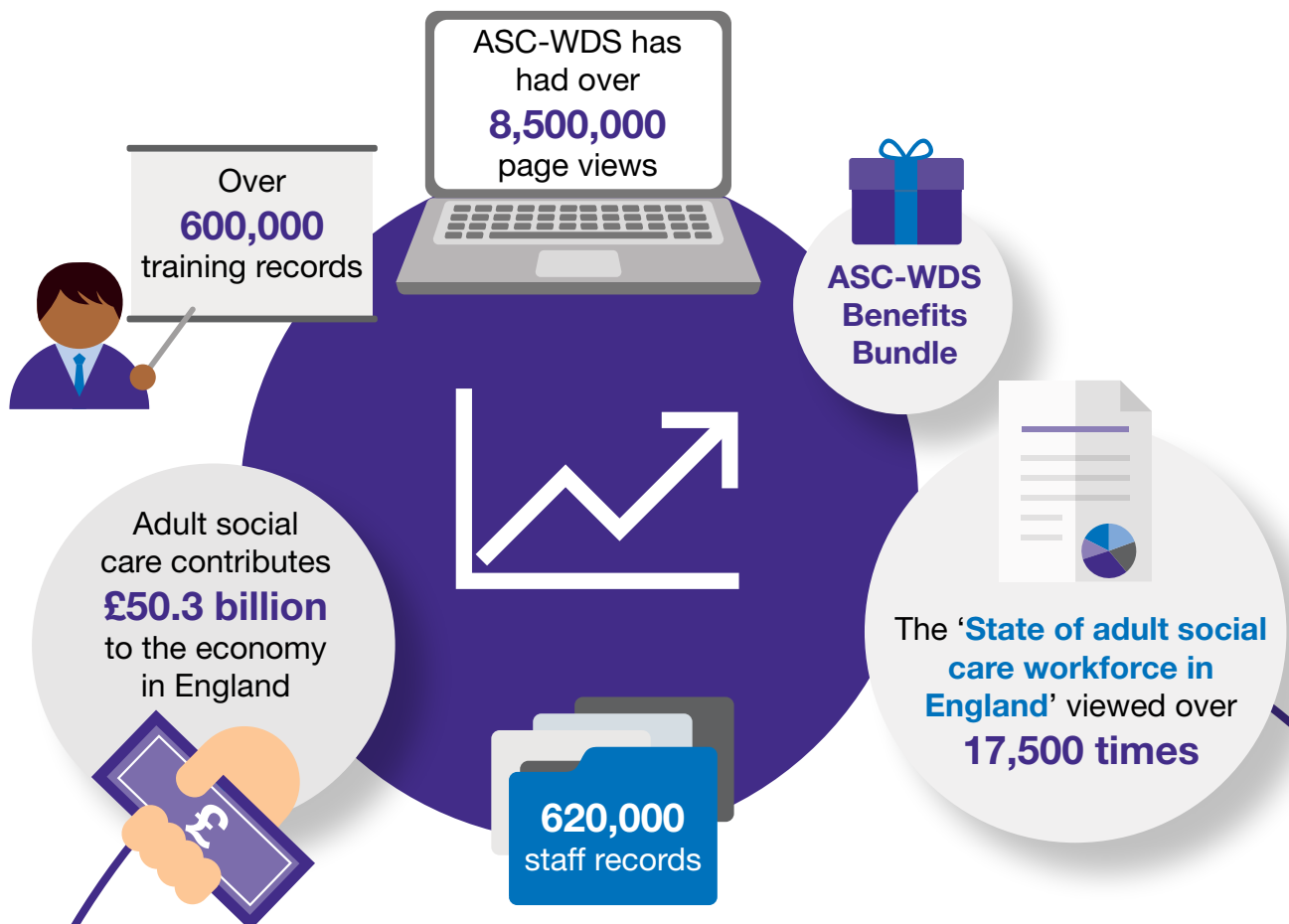


# Adult social care workforce data



Our online data collection service, the [Adult Social Care Workforce Data Set](#) (ASC-WDS), is used by around **20,000 care providers in England**.



- ✓ We hold over **620,000 staff records**.
- ✓ Over **600,000 training records** have been added since January 2021.
- ✓ This year, the online service has had **8,500,000 page views**.
- ✓ In November 2021, we launched the [ASC-WDS Benefits Bundle](#) to offer account holders access to special offers and discounts across our products.
- ✓ The ['State of adult social care workforce in England'](#) report launched in October looking at the workforce characteristics, issues and trends such as demographics, pay, vacancies and staff turnover. The interactive data visualisation supporting the report has already been **viewed over 17,500 times**.
- ✓ Our ['The value of adult social care in England'](#) report showed adult social care contributes at least **£50.3 billion to the economy in England** and provides significant societal benefits.