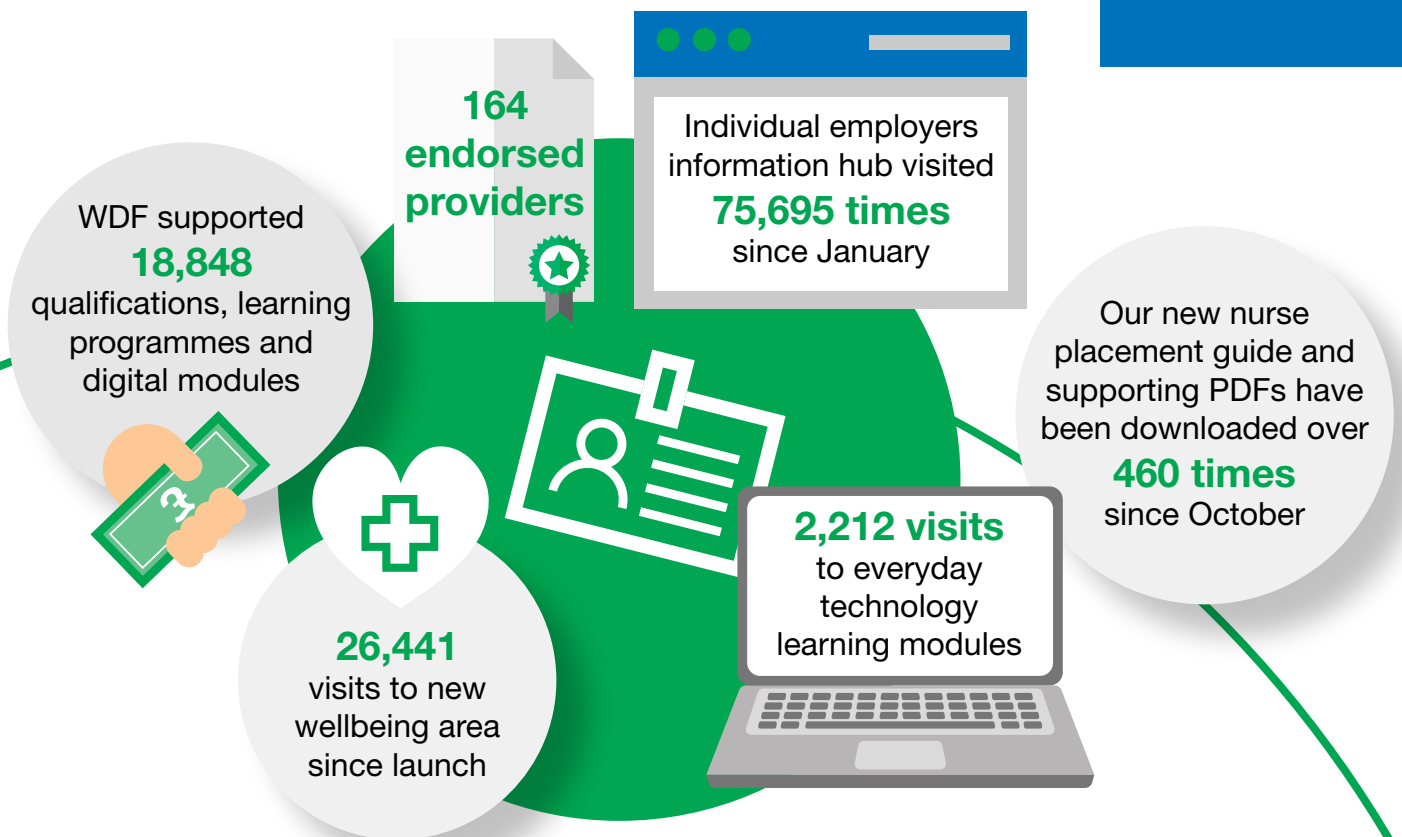


# Developing your workforce



A key element of our work is supporting social care employers to develop their workforce. These are some of the highlights from our learning and development work in 2021.



- ✓ Our [Workforce Development Fund \(WDF\)](#) supported the completion of **18,848 qualifications, learning programmes and digital modules**. It supported **2,351 establishments** to claim funding for **14,037 workers**.
- ✓ We launched '[An employer's guide to the deployment of qualified registered nursing associates in social care settings](#)' which has been downloaded **848 times** since July.
- ✓ Our '[How to make the most of student nurse placements](#)' guidance was launched to support the understanding of student nurse placements within social care settings. The full guide and supporting PDFs featuring different social care settings have been downloaded over **460 times** since October.
- ✓ Taking some of the learning from the pandemic, we worked with a range of supporting organisations to produce [everyday technology learning modules](#) to help social care staff support the people they care for use technology. Since May the modules have received **2,212 web visits**.
- ✓ Our [new wellbeing area](#) which provides information and useful resources on how to support the wellbeing of yourself and your team, has received **26,441 visits** since its launch in February.
- ✓ We now have **164 endorsed providers** who have been given our bespoke quality mark delivering a selection of learning programmes within the sector.
- ✓ Our [individual employers' information hub](#) was visited **75,695 times**, providing guidance, templates and resources about training and managing personal assistants.