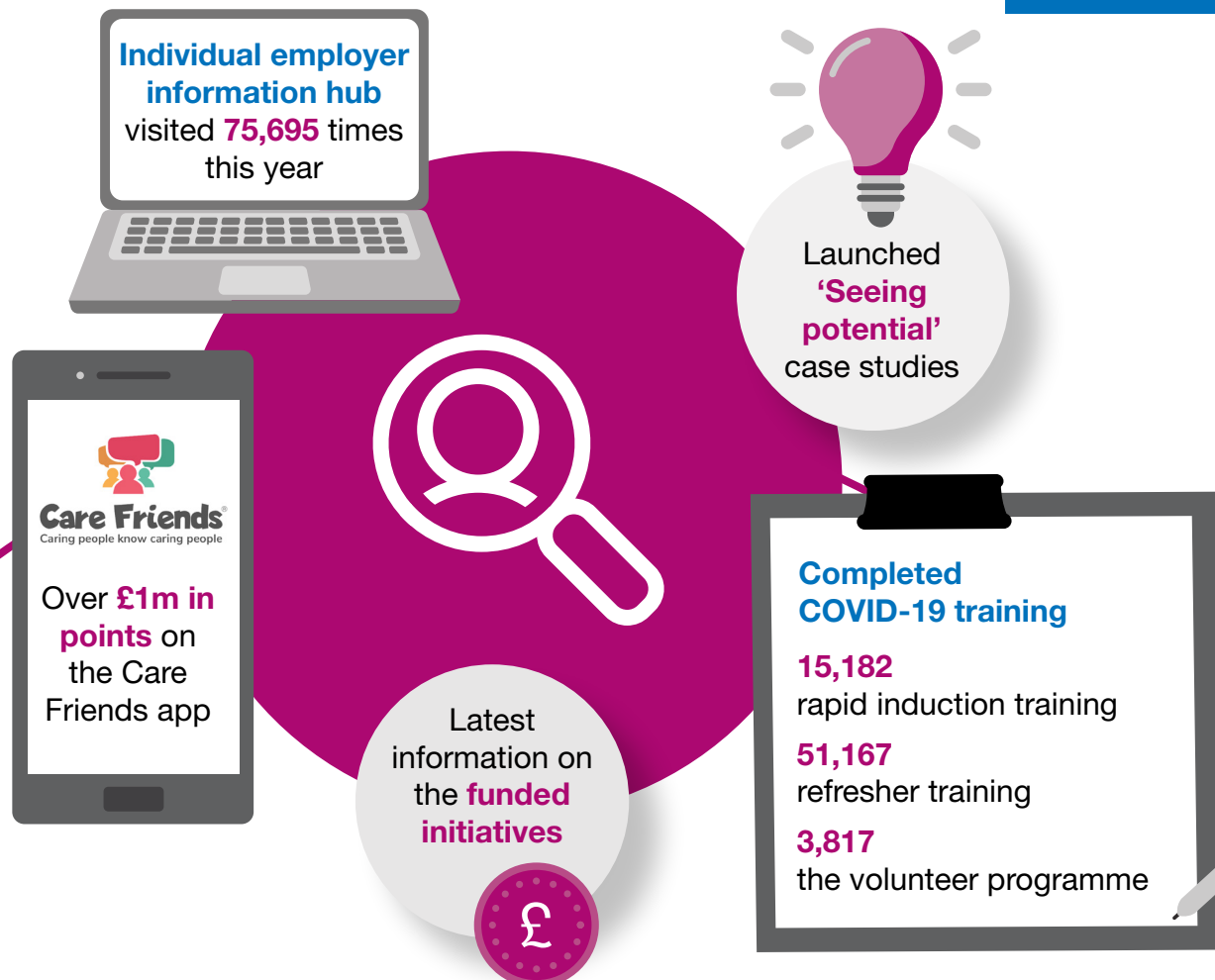


# Recruitment support



We have a range of resources available online to support you to find and keep workers. These are some of the highlights from our recruitment support through 2021.



- ✓ We launched our **'Seeing potential'** case studies which show how locally-based programmes can support those from non-traditional backgrounds into social care.
- ✓ We pulled together the latest information on the **funded initiatives** available to help employers recruit and develop staff.
- ✓ Our **individual employer information hub** was visited **75,695 times** this year, providing guidance, templates and resources about recruiting, training, and managing personal assistants.
- ✓ **Essential training** was introduced in response to the COVID-19 pandemic to help people get the correct level of training to complete their duties safely. From 2020-21, **15,182** completed rapid induction training, **51,167** completed refresher training and **3,817** completed the volunteer programme.
- ✓ **Care Friends**, the employee referral recruitment app launched in partnership with Skills for Care in 2020, has earned care workers over **£1million in points** since its launch.